

## Best worlds graduation projects

### მსოფლიოს საუკეთესო დამამთავრებელი პროექტი

2017 წელს აჰმედაბადში ჩატარდა “არქიპრიქსის” საერთაშორისო კონკურსი მსოფლიოს არქიტექტურულ სკოლებს შორის საუკეთესო დამამთავრებელი არქიტექტურული პროექტის გამოსავლენად.

ამ კონკურსში ტრადიციულად მონაწილეობას ღებულობს მსოფლიოს ხვადასხვა ქვეყნის (აზია, აფრიკა, ამერიკა, ევროპა) 87 არქიტექტურული სკოლა. საქართველო წარმოდგენილია ორი არქიტექტურული სკოლით: სტუ - ს არქიტექტურის, ურბანისტიკის და დიზაინის ფაკულტეტი და თსსა - ს არქიტექტურული ფაკულტეტი. 87 ქვეყნიდან კონკურსზე გაგზავნილი იყო 385 პროექტი. თვითოეულმა სკოლამ კონკურსზე წარადგინა სკოლის საუკეთესო პროექტი.

საქართველოს ტექნოკური უნივერსიტეტის არქიტექტურის, ურბანისტიკის და დიზაინის ფაკულტეტიდან კონკურსზე გაიგზავნილი იქნა მამუკა ბარათაშვილის სამაგისტრო დამამთავრებელი პროექტი: „ობსერვატორია, მუზეუმი და ტურისტული ცენტრი ხევსურეთში“. ხელმძღვანელი პროფესორი გიანადირაძე. მამუკას პროექტი მოხვდა ხუთ საუკეთესო პროექტებს შორის.

Most of the activities of the Archiprix International Ahmedabad 2017 are behind us, but not all. We are working on the films and there will be exhibitions all over the world. Nevertheless I want to thank you already for submitting the best and very inspiring graduation project of your university **Observatory, Museum and touristic Center of khevsureti**. With great pleasure we will keep it on our website as part of our growing collection, you can see it here: <http://www.archiprix.org/2017/index.php?project=3755>.

In this way Archiprix International contributes to the presentation of your school in the public domain. The Archiprix International 2017 in Ahmedabad was the most successful editions so far. We received 385 entries from 87 countries, more than ever. The workshops were very inspiring. I will keep you informed about our further activities.

#### **Make your own exhibition**

On our website files are available for a 'do it yourself exhibition'. With the aid of the files it is possible to create an ARCHIPRIX INTERNATIONAL AHMEDABAD 2017 EXHIBITION in a simple and economic way. Everybody is free to use this facility. We especially encourage parties connected to the initiative like participants, participating universities, architectural institutes or galleries to locally present the exhibition and thus raise the awareness for the initiative of the Archiprix International. You can use the data you find on the site to make an exhibition, for example to expose in in the *Faculty of Architecture, Urban Planning and Design, Georgian Technical University*. If you want you can add

your project *Observatory, Museum and touristic Center of khevsureti* to the presentation. You can design the presentation of your project yourself, based on the available presentations. If you inform us we will mention the exhibition on our website.

Exhibition component parts:

1: 41 EXHIBITION PANELS + introduction panels > 41 pdf 's to print with nominated projects and participants favorites; size A1 (841 mm wide, 594 mm high), scalable to A0 (1189 mm wide, 841 mm high), or minimum A2 (594 mm wide, 420 mm high). [www.archiprix.org/exhibition](http://www.archiprix.org/exhibition)

Henk van der Veen

[www.archiprix.org](http://www.archiprix.org)

## OBSERVATORY, MUSEUM AND TOURISTIC CENTER OF KHEVSURETI 2017

Location: Georgia | Khevsureti



**Designer(s): Mamuka Baratashvili**

Georgian Technical University

Faculty of Architecture, Urban Planning and Design

Tutor(s): Gia nadiradze

---

ASIA | GEORGIA | TBILISI

---

Discipline: Architecture

Categories: cultural, infrastructure, regional, mountain, medium

---

The project territory is located in Khevsureti, Georgia on a mountain of the Caucasus range between the fortress-town of Mutso and Shatili at an altitude of 2200 meters. The project aims to enliven abandoned villages with touristic routes and by granting it new functions. In the framework of the project, an observatory, a touristic centre and a museum shall be provided. These are going to be connected via rope-ways to the village of Shatili and the fortress-town of Mutso. The concept of the project is derived from the principles of the architecture of fortresses, towers and terrace constructions common to the Caucasus mountain range.



## GEORGIAN WINE CULTURE CENTER 2015

Location: Georgia, Kakheti | Alazani Valley



**Designer(s):** Beka Khutsishvili  
Georgian Technical University  
Faculty of Architecture, Urban Planning and Design  
**Tutor(s):** Vakhtang Davitaia, Nino Imnadze

---

ASIA | GEORGIA | TBILISI

---

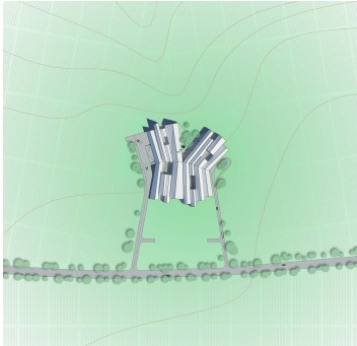
**Discipline:** Architecture

**Categories:** cultural

---

The topic of the project is wine culture and production in Georgia. The project is situated in Georgia, in the Kakheti region, in the valley of the river Alazani. The river Alazani is one of the main features of Kakheti, zigzagging down the valley. Among other distinguishing features is the Caucasus mountains.

which runs parallel to the river. This communication between horizontal line of valley with the snow covered mountains of caucasus creates beautiful and mystical space, which became an inspiration of project. The building is an allegory of snow-capped Caucasus Mountains, It is laid out horizontally in the valley and continues rhythm along vineyards. Project comprises three main functions: wine production , wine culture museum, and small guesthouse for tourists. The building consists of one underground and ground floor. On the first floor is grape receiving and recycling space, administration, exhibition and conference halls, restaurants, courtyards, tourist reception hall, library, cinema, hotel, rest area. In underground floor is wine storage and techical facilities. From the south, facade is closed where located museum and conference halls but north facade is maximum opened, from there you can enjoy a wonderful view of the Caucasus mountain range and with view of vineyard. Entrance for visitors and tourists is from east side of the building and west side of building is entrance for wine factory.



## **MEDIATEQUE IN ABASTUMANI OBSERVATORY 2013**

Location: Georgia | Abastumani Observatory



**Designer(s): Lasha Barblishvili**  
Georgian Technical University  
Faculty of Architecture, Urban Planning and Design  
Tutor(s): Nino Imnadze

---

**ASIA | GEORGIA | TBILISI**

---

**Discipline: Architecture**

**Categories: cultural, eco, medium**

---

The project territory is situated in Georgia , in Meskheta region , in Abastumani at the Khanobili mountain. Territory is situated at 1600 metre from the sea level. At this territory is built observatory. It based in 1932 by astrophysics scientist Evgeni Kharaze. There are 14 telescopes and they all have the different prescripts. Many of them built in 1940-1960 . The reason while built observatory at this territory is that here is the conveniences of nature. There is 80 % unclouded

days in a year. This observatory was the best in Soviet single and was one of the good in the world too. The astronomers from here have many new debugs. My project regarding to built here Mediateque, information center. Now here is small information center with small conference hall. I think that this place needs big information space, where will be lecture spaces, conference spaces, meeting rooms, library, kafe-bar, cinema. Here are working scientists, astrophysics, and they have not good contacts in other observatories. In my building astrophysics can meet colleagues from other countries and exchange of information. Students will hear lectures. This building has only one floor. because here is 14 telescope and they need full space for work. The Building is up from ground level, because here is many small trees. Building has metal construction in slabs, and metal columns. here is two ramps. inside is lecture spaces, conference spaces, closed meeting rooms for confidential meetings, library, cinema, cafe-bar. on the roof is the landing space for helicopter. This building is well with the nature. Human always try to learn the world , as he can .The world where he lives , for find his place in it. I, as architect await to conducive to astronomers and to physicists with my project, because they have better stipulations to work and have better achievements too.



## MUSEUM OF CONTEMPORARY ART 2011

### Project statement

Location: Georgia | Tbilisi



**Designer(s): Teimuraz Ninua**  
Georgian Technical University  
Faculty of Architecture, Urban Planning and Design  
Tutor(s): Shota Bostanashvili'Giuli Gegelia

---

ASIA | GEORGIA | TBILISI

---

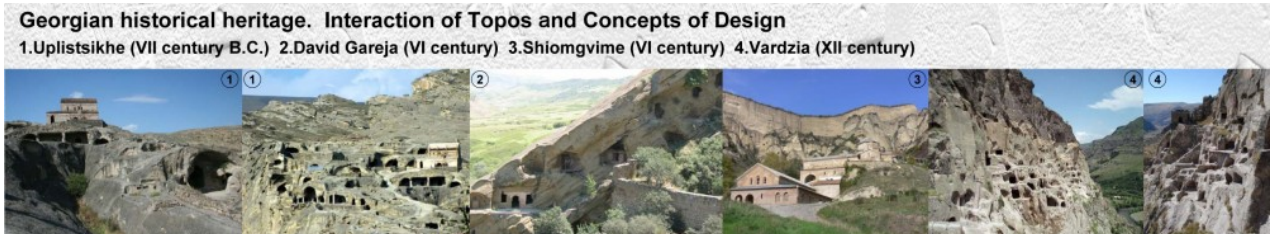
**Discipline: Architecture, Urban Design, Landscape Design**

**Categories: cultural, modern, mountain**

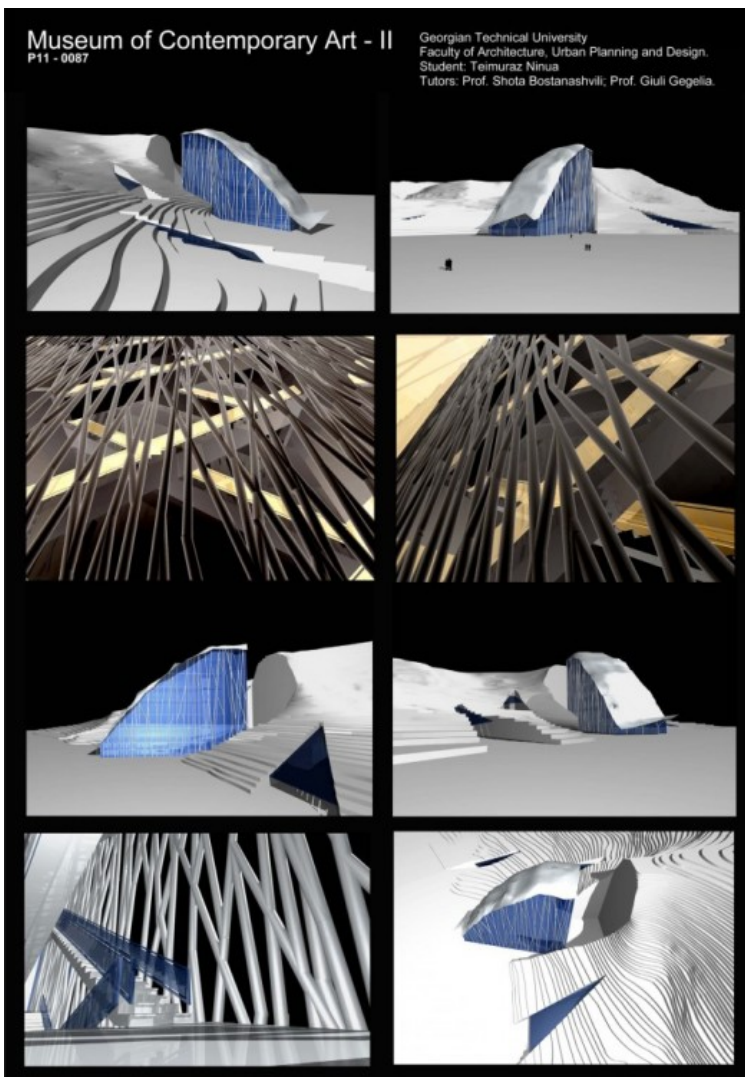
---

Here is represented interaction of two different concepts of design of the museum of Contemporary art for the same site. In the first concept (drafts 1,2,3) the autumn leaves falling are metamorphised. The fallen "died" leaves are associated with the past and antiquity and with the help of cultural reflections (putting them into frame, representing them in different material or scale) it's possible to make them into the museum exhibits. The metaphor of leaves is expressed in the roof of the construction by means of the moving wavy glass awnings. Thereby, the fifth facade of the construction is a kind of an artistic interpretation of the events taking place in the heart of the nature. The building body is something like a pedestal on which elements of nature are exhibited in materials and scales. Here architecture itself talks in language of nature and

represents its pedestal. In the second concept (drafts 4,5,6) There is performed a topos deconstruction. In the space there is represented the mountain fragment modified in the material. It seems as if it is cut from mount array and has changed its location. In order to make it eminent the ground is consciously ripped out and transferred from mountain slope, whereas the emptiness being left in mount is associated as a “cultural trace”. The body and the upper cover of the museum are identical to the space left in mountain. There are some more rips along with the large size cut in the mount which increases the artistic affect of the work. The elements of nature hereby represented as waterfall is brought in the interior of the building. The waterfall itself becomes expositional space, throwing of the copies of exhibits made in special material along with the water flow.



Georgian historical heritage. Interaction of Topos and Concepts of Design





## CL(OU)DH(OU)SE 2009

### a multi-use project

Location: Georgia | Tbilisi



**Designer(s): David Bostanashvili**

**Georgian Technical University**

**Faculty of Architecture, Urban Planning and Design**

**Tutor(s): Shota Bostanashvili, Vakhtang Davitaia**

---

**ASIA | GEORGIA | TBILISI**

---

**Discipline: Architecture**

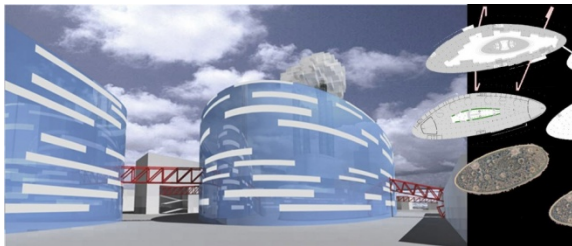
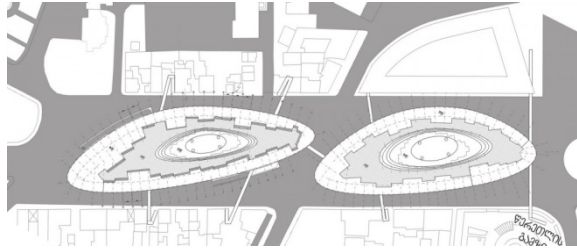
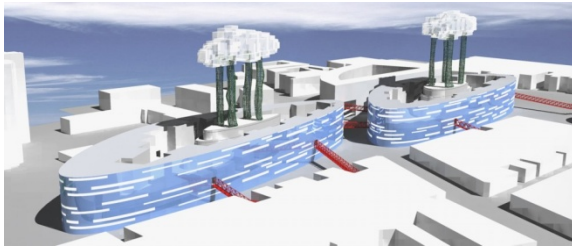
**Categories: cultural, office, mixed use, large, city**

---

ENGLISH GEORGIAN - ქართული

The project and the medium of its representation offer polysemantic readings. The title: cl(ou)dh(ou)se is a linguistic hybrid suggesting no definite meaning. The entrance level (above the ground-level dedicated to a multi-use space) structured like a small urban tissue with "Streets" and "Piazza", full of lively activities, acts as the main "message" of the project: "Town in house"; inverting conventional syntagm "house in town", this "senseless" paradox adds informative value to the message. The two oval volumes of the center, harbored like a Ship with red footbridges providing the only access points to it, are in sharp contrast to the geometric tissue of the city. They are like foreign bodies that tend to transform the grid of the surroundings into fluid geometry. The two oval volumes resemble a self-contained cell, its glazed facade acting as a shell but providing full visual interaction with the surroundings. At the center of the "Cell" is the terraced "Nucleus" (an art gallery): its semantic source comes from the millennia-long history of

architecture beginning with the step-pyramids and ziggurats. Four pillars rising from the “Nucleus” provide access to the “Cloud”: the white volume high above the ground (a space for meditation and reading) resembling a natural cloud and the background “sky” resembling the real sky belong to paper. They lack the features of a real cloud/sky and through pixelation this structure acts as an image/substance. The presentation format of the project is the Image rather than Information. The project, rich with connotations, is an alternative to the imposing pragmatism and recalls utopia at its support. The territory of the project (a 21500 m2 rectangular plot of land), occupies a key point in the bustling part of Tbilisi, capital of Georgia. The project aims to create in this area of the city a landmark that would shape its architectural identity and transform the territory (geographical notion) into a Place (cultural topos).



## DEVELOPMENT OF THE SEAPORT CITY – ANAKLIA 2001

**Designer(s):** Sophia Sakhanberidze  
Georgian Technical University  
Faculty of Architecture, Urban Planning and Design  
**Tutor(s):** Givi Shavdia

---

ASIA | GEORGIA | TBILISI

---

**Discipline:**

**Categories:** park, eco, medium, city, infrastructure

---

